

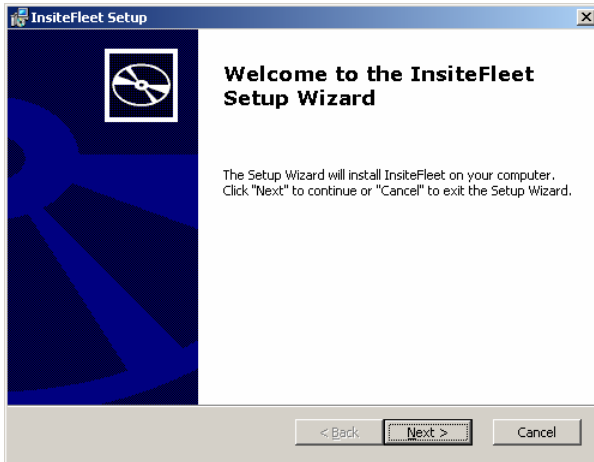
Installing InsiteFleet Server

Download the InsiteFleet installation package to your computer.

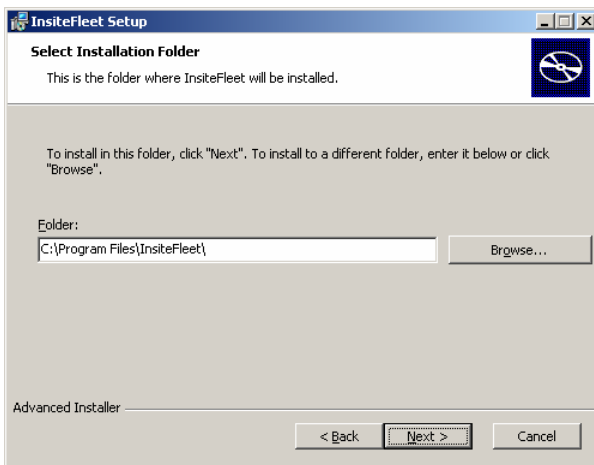


InsiteFleet.msi

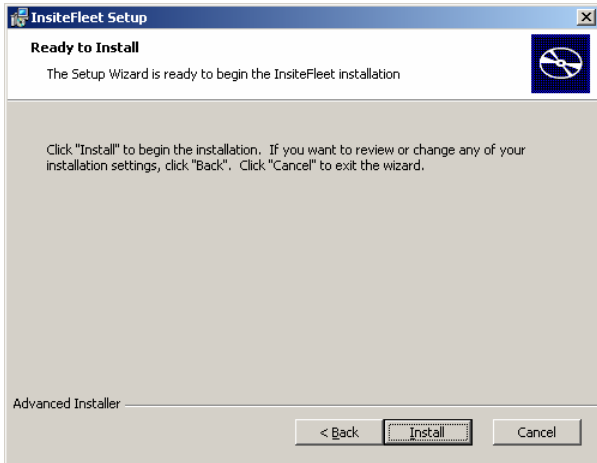
Double click on the InsiteFleet.msi icon



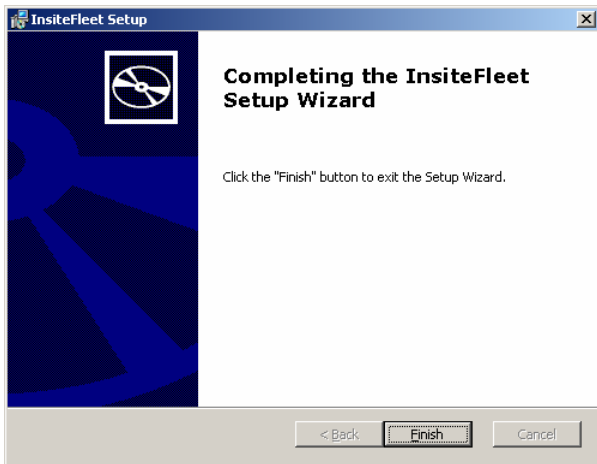
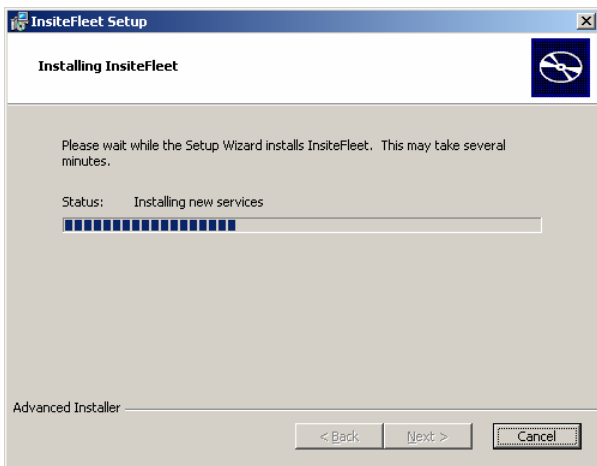
Click Next



Click Next



Click Install



Click Finish

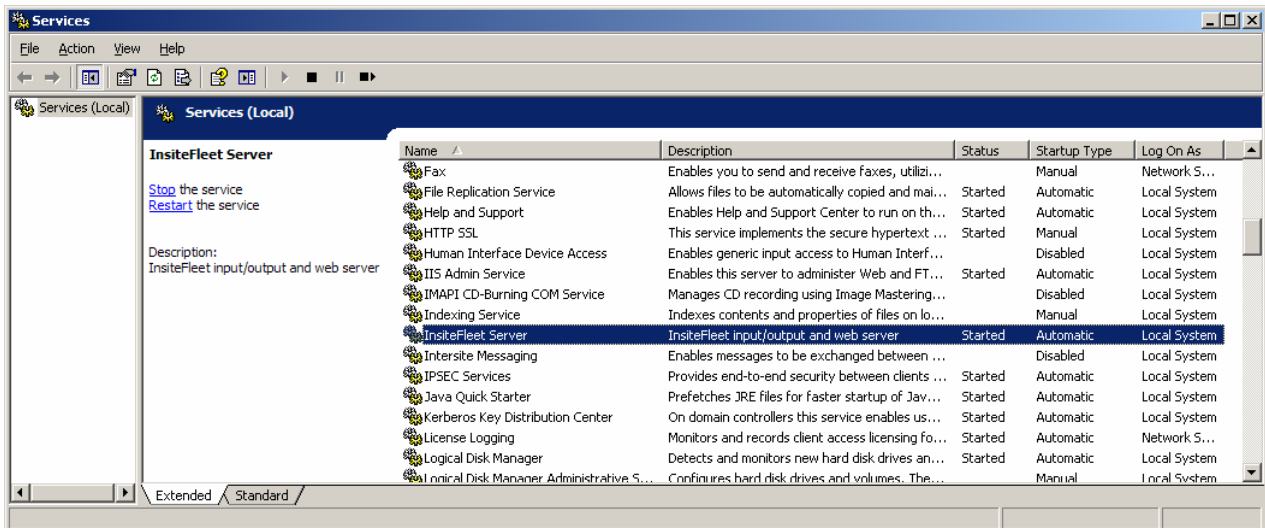
Stopping and Starting the InsiteFleet Server Service

The software is installed as a background service, and **begin to run automatically upon installation**. It will automatically begin to run in the background whenever the computer is turned on.

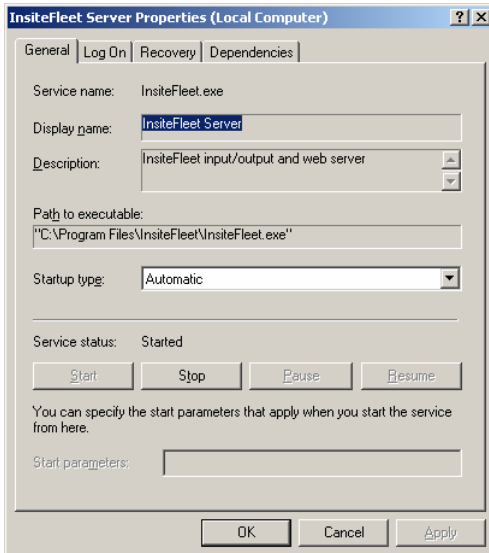
To verify that the software has been installed and is running:

Start... Settings... Control Panel... Administrative Tools... Services...

Then scroll down to find the InsiteFleet Server service:

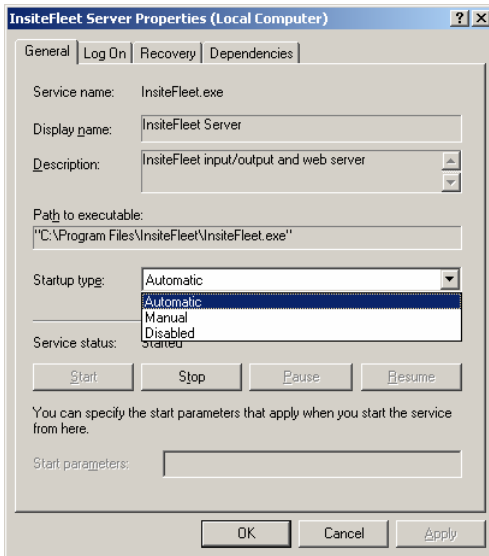


Notice that the Status is "Started" and the Startup Type is "Automatic"
Double click on the service



Notice the Start button is grayed out because the service is already running.
Notice the Stop button, which can be used to stop the InsiteFleet Server.

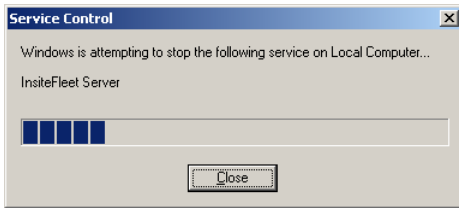
Notice the Startup type is "Automatic". You can change the startup by selecting from the dropdown list:



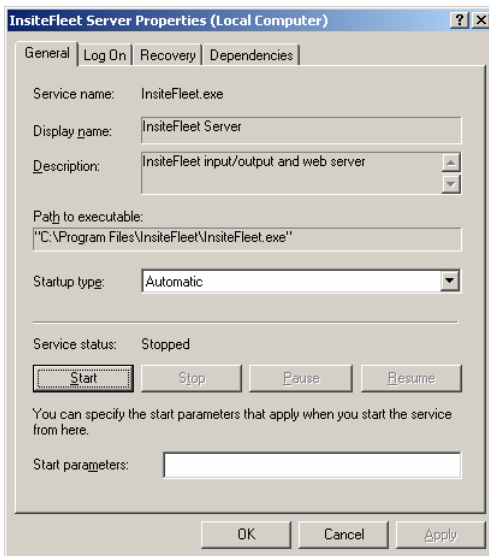
If you do not wish the InsiteFleet server to run continuously in the background, change the Startup type to Manual. In that case you will have to manually start the InsiteFleet server whenever you wish to use it.

If you want to disable the InsiteFleet server entirely, change it to Disabled.

You can stop and restart the InsiteFleet server by clicking on the Stop button:

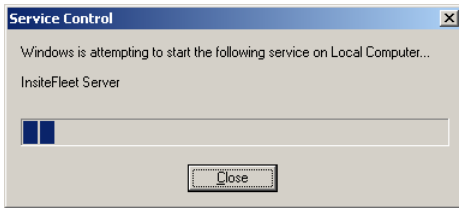


For a few seconds this popup will be displayed, which then disappears.

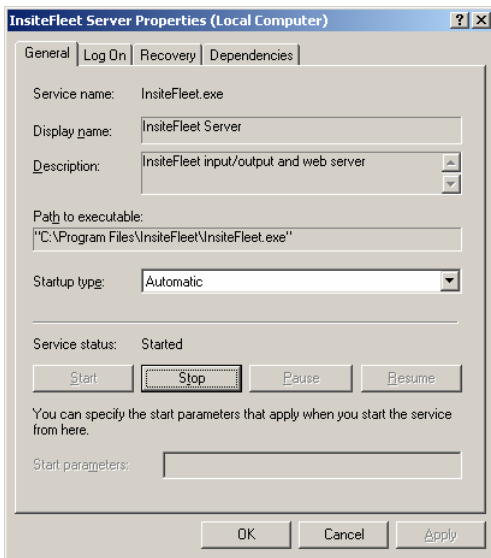


Notice that the Service status is now "Stopped", and the Start button has become available.

Click the Start button to start the InsiteFleet server again:



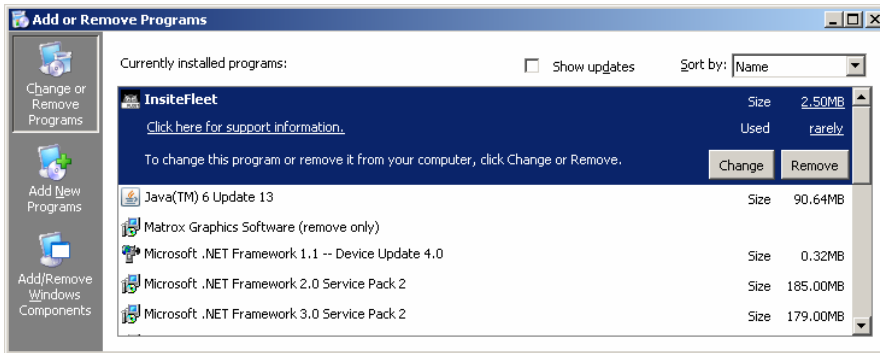
This popup is display for about a second, and it then disappears.



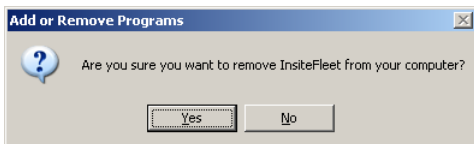
Notice that the Service status is once again "Started".

To Uninstall the InsiteFleet Server

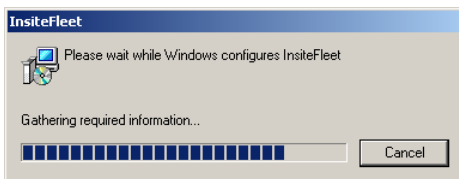
You do not need to stop the service before uninstalling, but you may if you wish.
Start... Settings... Control Panel... Add or Remove Programs...



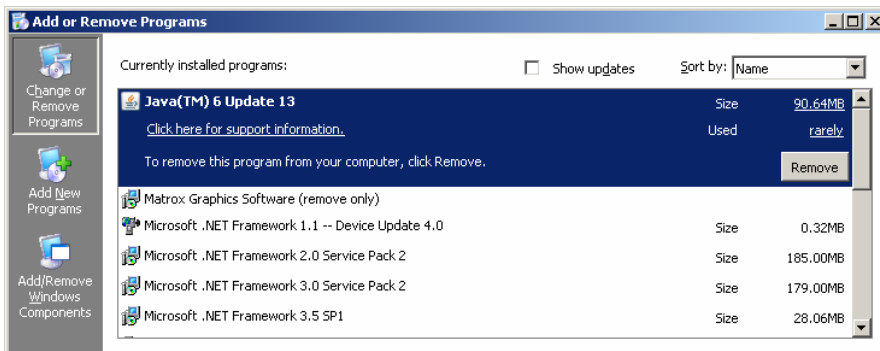
Select InsiteFleet and then click the Remove button.



Click Yes



This popup is displayed for a moment, then disappears.
Notice that InsiteFleet has been removed.



Also, you can confirm that the InsiteFleet service no longer appears in the list of Services.